



BENGALURU | CHENNAI | GOA | RUDRAPUR | PUNE





01

THICKNESSES AVAILABLE:

0.85 mm to 10 mm & above
in roll form.

PLANKS AVAILABLE:

15 mm to 100 mm and higher thicknesses.

WIDTHS AVAILABLE:

1 meter or more, depending upon thickness.

CUSTOMIZED VARIANTS AVAILABLE:

With length, width, thickness, density or
lamination (e.g. LM/ML) as specified.

COLORS AVAILABLE:

Natural, black, or as specified.

SPECIAL GRADES AVAILABLE:

Fire retardant, anti-static, etc.

Expanded polyethylene foam or EPE foam packaging, is a semi-rigid, non-cross-linked and closed-cell variety of foam. EPE offers cushioning effect to the product which it encases and is shock absorbent, durable, water & moisture proof. It is nontoxic and resistant to fungi, insects, etc.

Being recyclable and eco-friendly helps adhere to EHS guidelines. It is allowed to be used in export packing in 100% EOU and companies certified under ISO 14000.



USES

It has almost unlimited uses. Its material composition makes it an ideal material to be fabricated and die punched to various shapes and sizes to accommodate delicate and fragile products.



INDUSTRIES

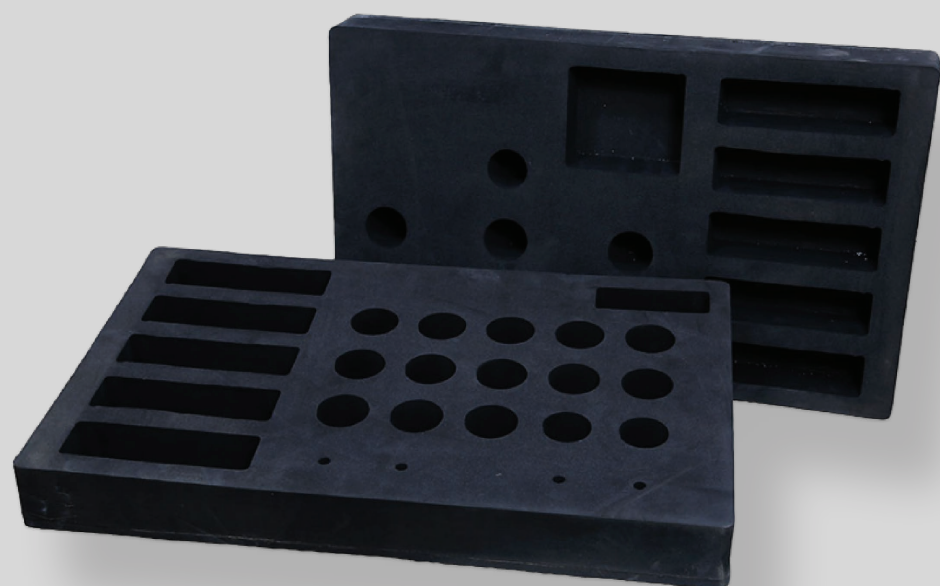
Electronics and computer products and components, engineering components, consumer durables, medical devices, power management systems and aerospace components.



AVAILABLE VARIANTS

Foam buffers / Foam Corners / EPE Fitments / EPE Cut-Sheets / EPE Pouches / Customized Composite packing.

EXPANDED POLYETHYLENE FOAM



CROSSLINKED POLYETHYLENE FOAM

02

SHEET SIZE:

600 / 1700 mm to 1200 / 2600 mm

RANGE OF THICKNESS:

1 mm to 50 mm

[sheet/ bun]

Available in various densities and shore hardness.

SPECIAL GRADES AVAILABLE:

In XLPE can be thermoformed for various applications like caps, sports goods, liners, etc.

CUSTOMIZED VARIANTS AVAILABLE:

Custom made buffers /cut sheets can be offered.

Cross-linked Polythene is a form of polyethylene wherein the repeating polyethylene polymer units have been cross linked. XLPE is smooth and flat surfaced, providing greater dimensional stability.

It is non-corrosive and non-abrasive and has low thermal and water absorption.



USES

It is used primarily in applications which require high resilience, bearing capacities and some amount of water resistance such as protective case inserts, liners, caps, gaskets and sports goods, among others.



AVAILABLE VARIANTS

XLPE is available in a large number of grades with varying density, shore hardness and other mechanical properties.



CORRUGATED BOXES AND BOARDS

03

SPECIALISATION:

Specialisation in ECT based boards and high BS Boards (specific requirements)

FLUTE MEDIA:

Flute media in A/B/C/E flutes in Single wall, Double wall and Tri-wall.

PRINTING OPTIONS:

Offset, screen, roto printing options on boxes.

Corrugated board is a material consisting of a fluted corrugated sheet and one or two flat linerboards. The boards are used to make corrugated boxes of various dimensions.



USES

The boards are mostly used in boxes format across multiple industries, product ranges and packing.



AVAILABLE VARIANTS

Our offering covers a comprehensive range of corrugated boxes and sheets mentioned above.



OUR FINISHED PRODUCT OFFERINGS

Regular Containers (RSC) / Slotted Containers (FOL) / Fully Overlap Slotted Containers (HSC) / Half Slotted Containers (HSC) / Sleeves & Trays / Partitions & Separators / Corrugated Rolls / Air Cargo Corrugated Boxes / Shipping Containers & Boxes / Die Cut Boxes / As per FEFCO designs.



WOODEN PALLETS AND CRATES

04

CUSTOMIZED:

Customized plywood pallets which are exempted under ISPM 15 Norms.

FOAM SKID PALLETS:

High density foam skid pallets used as transit shock dampeners & anti vibration mounds.

CUSTOMIZED:

Customized fumigated / heat-treated wooden pallets / crates for export shipment use.

MULTIPLE SHIPMENT:

Wooden pallets/crates for domestic use, Recyclable crates for multiple shipments.

PACKAGING:

Wooden Collars and Collapsible crates.

A wooden pallet is a flat transport structure made of wood/recycled material that supports goods in a stable fashion while being lifted by a fork-lift, front loader, or other jacking device, or a crane.



USES

Pallets / Crates are mostly used as the outer container for aggregated bulk movement of smaller product units or for single large products. The smooth and durable material makes it easier to be fork-lifted, transported, pushed and pulled in more rough movement conditions.



AVAILABLE VARIANTS

Euro size pallets / ISO pallets, custom size pallets with Plywood/Pine wood combination, skeleton Pine wood pallets / crates and custom design wooden packing.



COMPOSITE PACKAGING PRODUCTS

05

COMPOSITE PACKAGING PRODUCTS:

Composite packaging products are a combination of different packaging materials to form one single solution for a more complex / unique packaging need.



USES

It has almost unlimited uses in several combinations of material, size and shape. For example, it may include primary packaging such as EPE / XLPE / PU foams, a layer of secondary packaging such as a corrugated box and an overall protective layer such as wooden pallet for aggregated box transportation.



AVAILABLE VARIANTS

Many turnkey customization options can be designed and delivered for unique product, packing, handling and transportation requirements. Obtaining an integrated packaging solution (one-stop solution) simplifies the supply chain for customers.



AIR BUBBLE FILM

06

GRAMMAGE AVAILABLE:

45 gsm to 250 gsm

STANDARD WIDTHS:

1/ 1.5/ 2.0 mtrs

COLOR:

Natural Color

SPECIAL GRADES AVAILABLE:

Anti-static / biodegradable grades / multiple laminates and sandwiched bubble sheets.

Commonly known as Bubble wrap, it is a foldable / flexible plastic material used for packing fragile items. Regularly spaced, protruding air-filled hemispheres (bubbles), it is lightweight, hygienic and non-toxic and extremely shock absorbent and abrasion resistant.


USES

The air bubbles provide cushioning for fragile items and has multiple applications. Electronics and computer products and components, consumer durables, fragile products like glassware and also mattresses among others.


CUSTOMIZED VARIANTS

Across customized dimensions, distinct contours/ edges, cut-sheets, covers, pouches, sizes, colours or grades are also available on request, subject to techno-commercial viability.



PACKAGING ACCESSORIES

07

LDPE / HDPE /LLDPE BAGS, SHEETS:

Customised polymer based films and bags protect products from dust, rain and transit damage and are used across numerous industry verticals.

ALUMINIUM FOIL BARRIER BAGS, SHEETS:

Moisture barrier bags, also known as foil bags are one of the most effective packaging in protection against corrosive damage caused by humidity, moisture, oxygen, salt spray, etc.

VAPOUR CORROSION INHIBITOR BAGS, SHEET AND DESSICANTS:

Vapour Corrosion Inhibitor products inhibits corrosion of metals through volatilization of chemicals in an 'enclosed' environment which forms a protective molecular layer.

DESSICANTS, SILICA GEL, MOISTURE ABSORBERS:

Desiccants such as Silica gel, moisture absorbent tablets, clay desiccants etc. absorbs the moisture therefore protecting the product from water damage.

EDGE GUARDS

Made from environment friendly and recyclable paper, edge guards protect the packaged product against the strapping damage at the time of transportation and handling of goods.

Packaging accessories are like the nuts and bolts of packaging. They are smaller and often overlooked components but go a long way in providing that extra support, protection, flexibility, cost saving and other such benefits.

At Superpacks, we work with numerous packaging accessories and consider them essential to our innovation and solution mindset.

ESD SAFE - STATIC SHIELDING / ANTISTATIC BAGS

Static shielding bags, made of metalized polyester (MET-PET), are an excellent ESD shield. Antistatic LDPE Bags are low-static generating pink polyethylene bags.



PACKAGING ACCESSORIES

08

HONEYCOMB BOARDS:

Made of paperboard in the form of honeycomb, the boards provide superior strength and shock absorption for heavy-duty outer packaging, while also saving on weight and material used.

PP FLUTED COLLAPSIBLE BOXES & TRAYS:

Re-usable plastic corrugated collapsible boxes and trays are made from lightweight material, and are used in industrial, automotive and other sectors.

DUNNAGE BAGS:

Dunnage bags are air-filled bags that serve multiple purposes such as filling voids between materials and the transport/ storage containers, absorb loads and absorb vibrations.

DESSICANTS, SILICA GEL, MOISTURE ABSORBERS:

Desiccants such as Silica gel, moisture absorbent tablets, clay desiccants etc. absorbs the moisture therefore protecting the product from water damage.

STRAPS: PET STRAPS / PP STRAP / CONTAINER LASHINGS & BUCKLES:

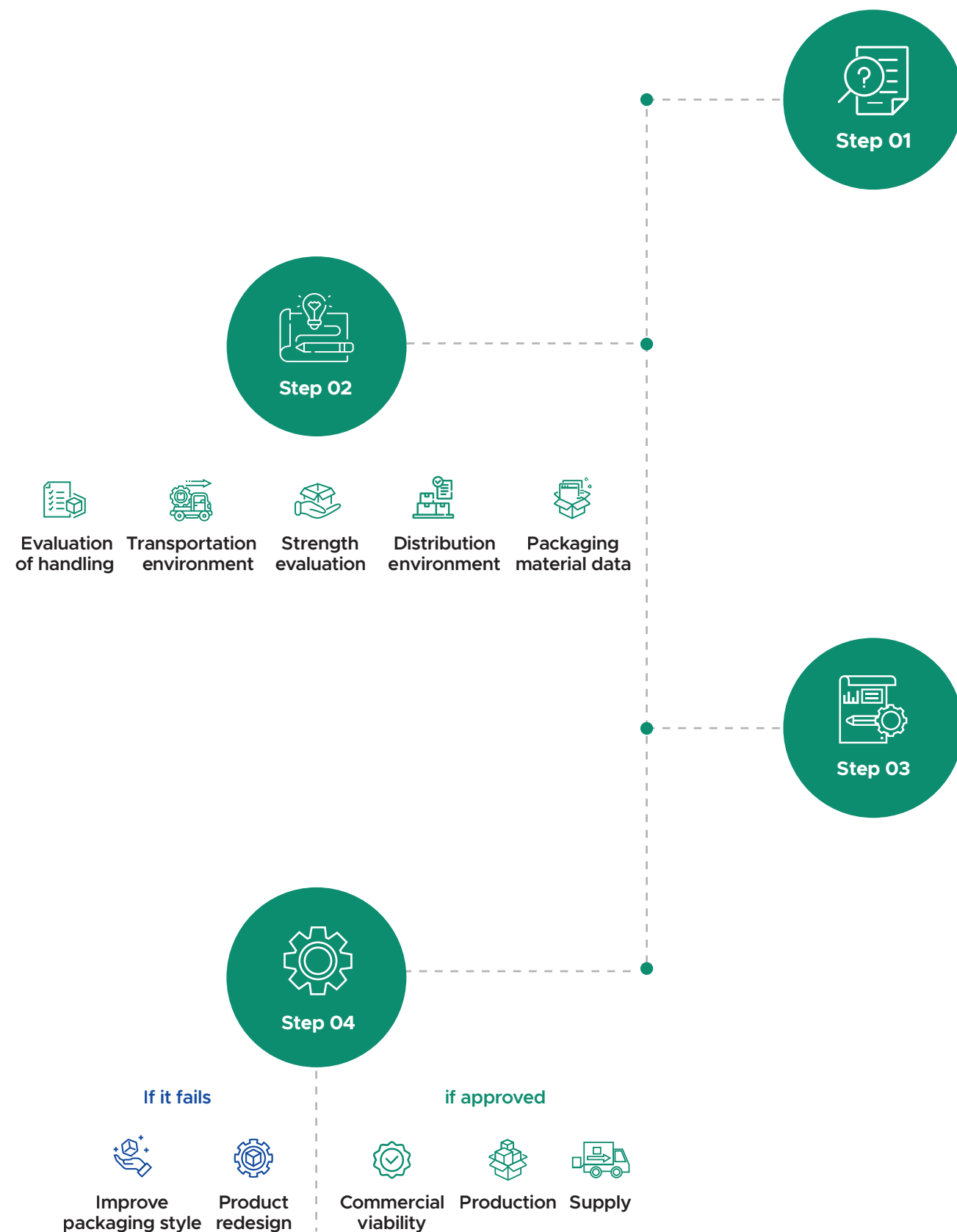
Lightweight strapping solutions have superior tensile strength and bind products together ensuring secure transportation of cargo in supply containers.

STRETCH FILM: PRE STRETCH / MACHINE STRETCH /MANUAL STRETCH:

Often used as an external layer of packaging, stretchable plastic films are wrapped around items to keep them tightly bound together and offer an additional layer of protection from the elements.

INDICATORS: TILT INDICATORS / SHOCK INDICATORS:

Highly reliable and cost effective tilt and shock indicators check whether or not the product has been transported properly and record the level of tilt/shock and the time it happened.



CUSTOM PACKAGING SOLUTIONS

01

UNDERSTANDING THE REQUIREMENT:

To initiate a project, all we need from you is your 'problem statement' and not necessarily your 'requirement/need'. We look at our existing solutions and product range to determine the best fit. If your requirement is unique, the solutions team explores several options in terms of ideal material, product renders, transit environment, etc. to suggest best-fit.

02

RESEARCH AND EVALUATION:

We look at our existing solutions and product range to determine the best fit. When the requirement is unique, the solutions team explores several options in terms of ideal material and design changes, to suggest best-fit to customers. The initial explorations are also put through rigorous tests such as 'Evaluation of Handling' to assess sturdiness and effectiveness.

03

DESIGN AND DEVELOPMENT:

Once the proposal has been mutually agreed upon, we set out to design the packaging and develop a prototype solution.

With a dedicated Engineering Design and Product Development we are laser-focused on helping our customers build tailor-made solutions that eliminate product damage, pilferage, material wastage, in addition to reducing handling and transportation costs. This approach has helped us deliver holistic and sustainable solutions, which are passed through rigorous standards and on ground testing, ensuring best - in - class quality.

04

TESTING:

Our solutions pass through another round of testing with all the parameters of material, needs, handling, quality, regulation and compliance (such as such as RoHS, i.e. The Restriction of Hazardous Substances_, etc; before moving to final production and delivery / shipment to customers.

